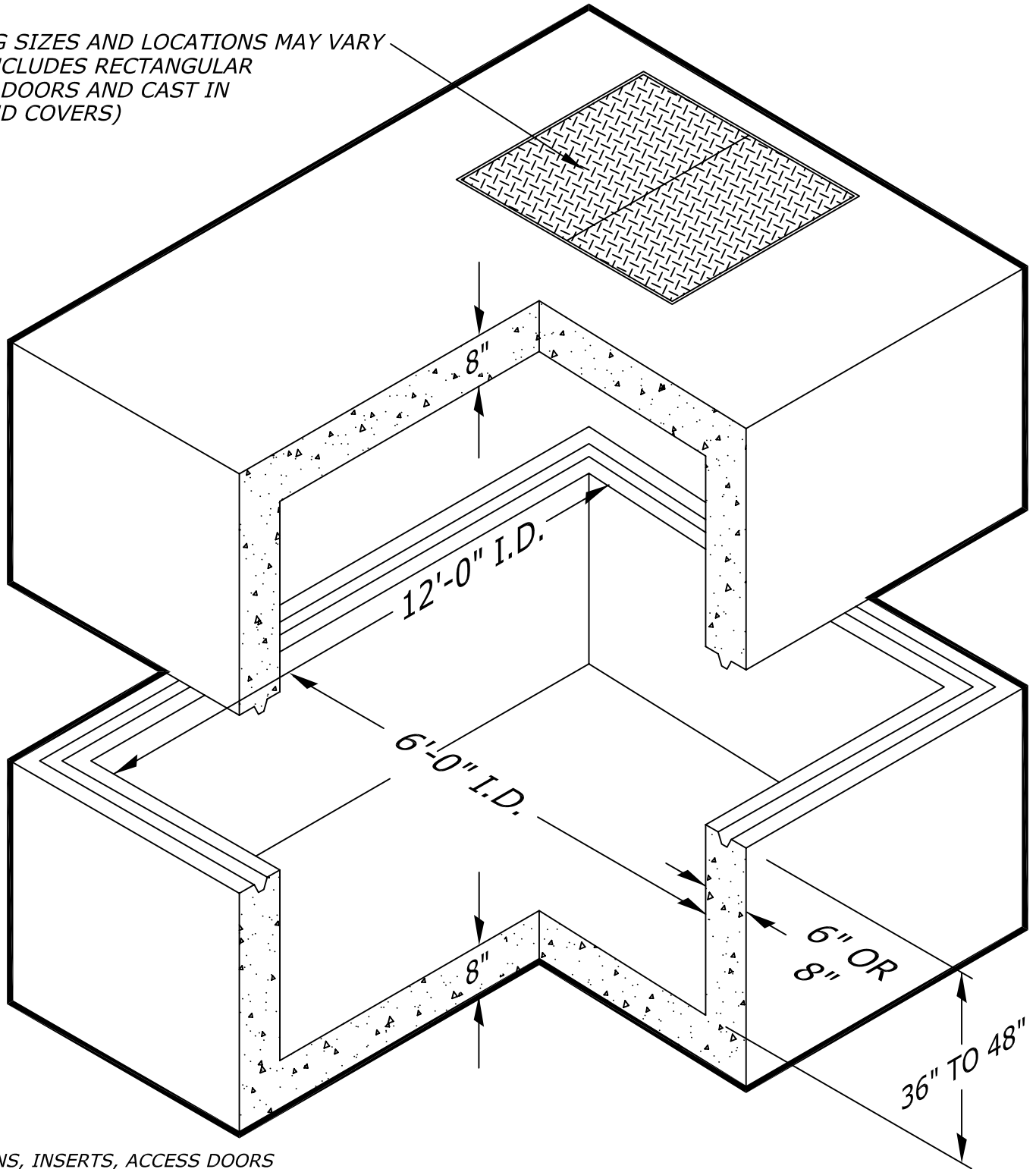


**GENERAL NOTES:**

36" HIGH SECTION (NO OPENINGS, 6" THK. WALL) = 17,650 LBS.

48" HIGH SECTION (NO OPENINGS, 6" THK. WALL) = 20,500 LBS.

OPENING SIZES AND LOCATIONS MAY VARY  
(THIS INCLUDES RECTANGULAR  
ACCESS DOORS AND CAST IN  
RING AND COVERS)



PULL IRONS, INSERTS, ACCESS DOORS  
SUMPS, KNOCKOUTS, BLOCKOUTS AND  
OPENINGS ARE AVAILABLE PER JOB  
REQUIREMENTS.

