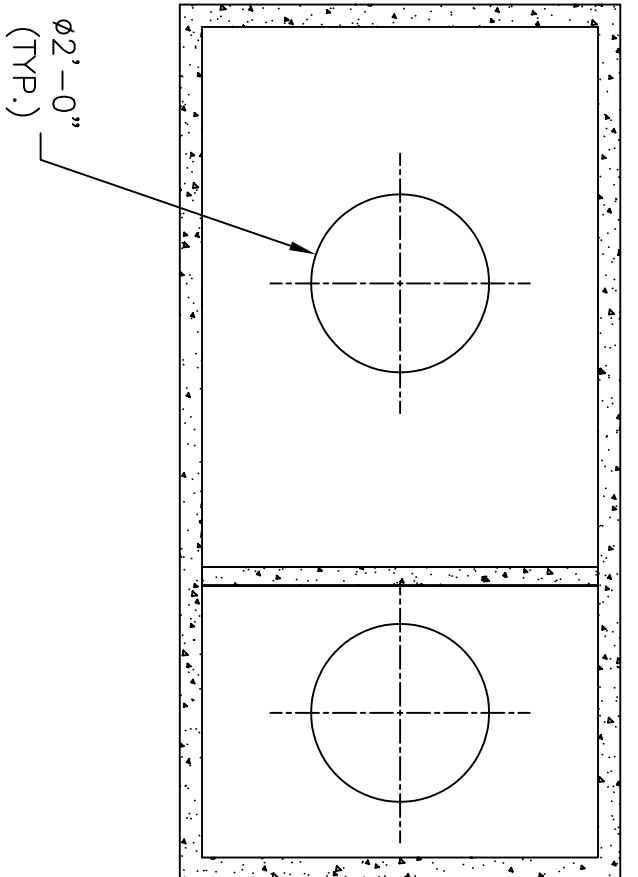
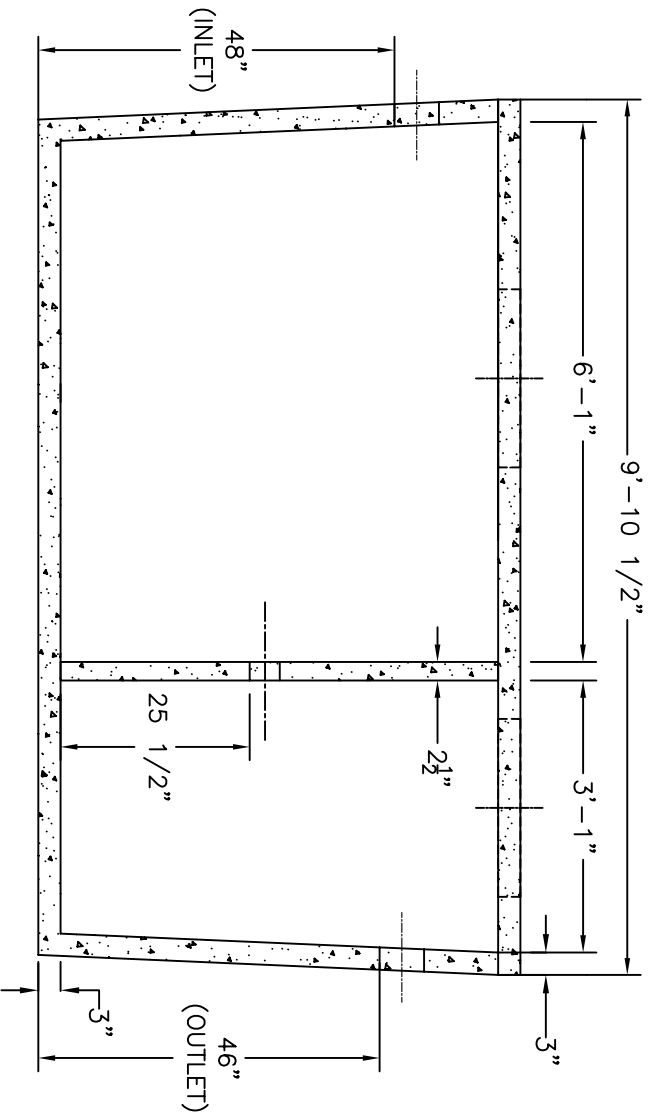
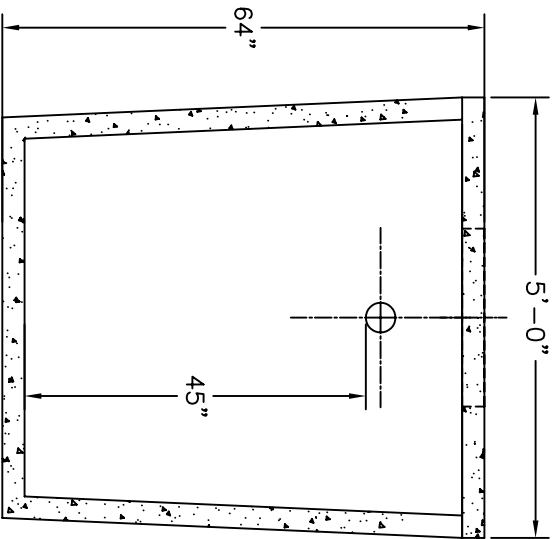


- NOTES:
1. DUE TO MASS MANUFACTURING, DIMENSIONS MAY VARY.
 2. EXCAVATION MUST ALLOW FOR 2' OF CLEARANCE AROUND TANK.
 3. SANITARY TEES, ELBOWS AND EXPANSION PIPES FURNISHED AND INSTALLED BY OTHERS PER PLUMBING ON INLET AND OUTLET.
 4. MASTIC SEALANT USED ON ALL JOINTS.
 5. GROUTING OF TANK WITH NON-SHRINK OR EPOXY GROUT AND WATER PROOFING BY OTHERS.
 6. ALL OPTIONAL ITEMS ARE ADDITIONAL CHARGE. OTHER APPLICATIONS, SOME MODIFICATIONS REQUIRED.
 7. TANK AND LID FOR TRAFFIC (H-20), DEEP BURIAL (OVER 5') OR MODIFIED DESIGN ARE AVAILABLE AT EXTRA COST.



4000 PSI CONCRETE



1050 GALLON SEPTIC TANK

