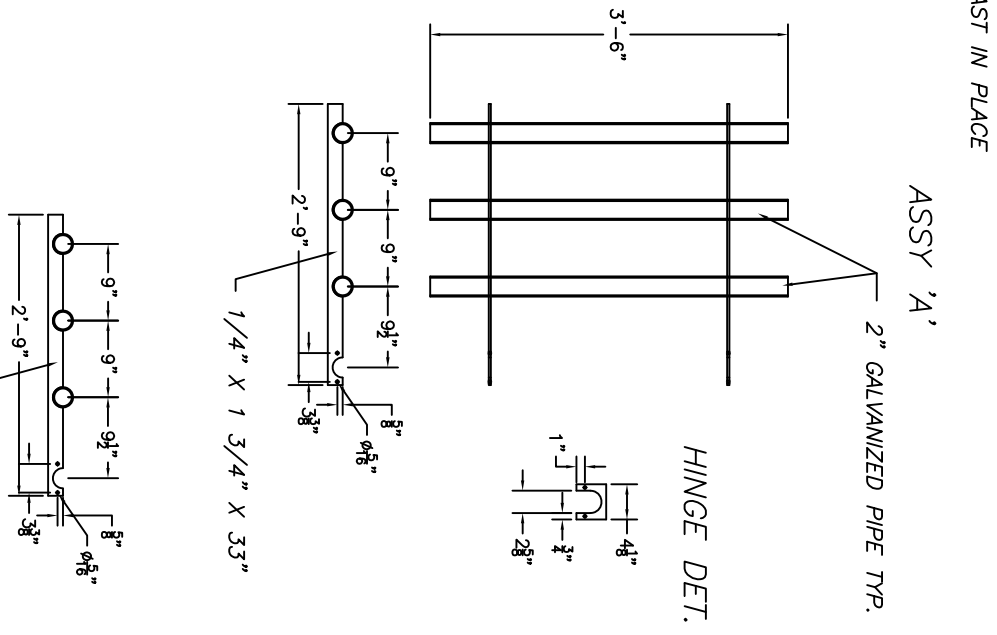
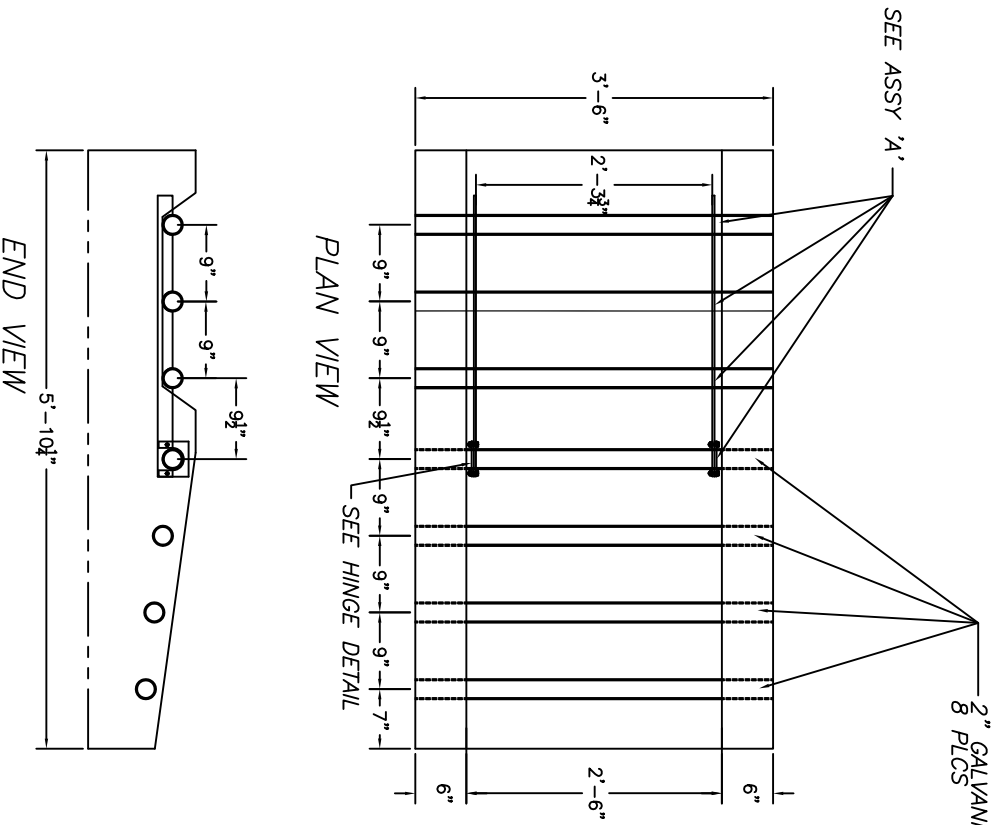


TYPE 7 DROP INLET

USE 2" GALVANIZED PIPE FOR ALL PCS. OF THIS ASSEMBLY
(SPRAY ALL MISC. DETAILS WITH GALVANOX PAINT)
PIPES TO BE FULL LENGTH OF WIDTH OF STRUCTURE (3'-6")



NOTE: SUPPLY (4) 1/4" X 1 1/8" HEX BOLTS W/NUTS (GALV)

