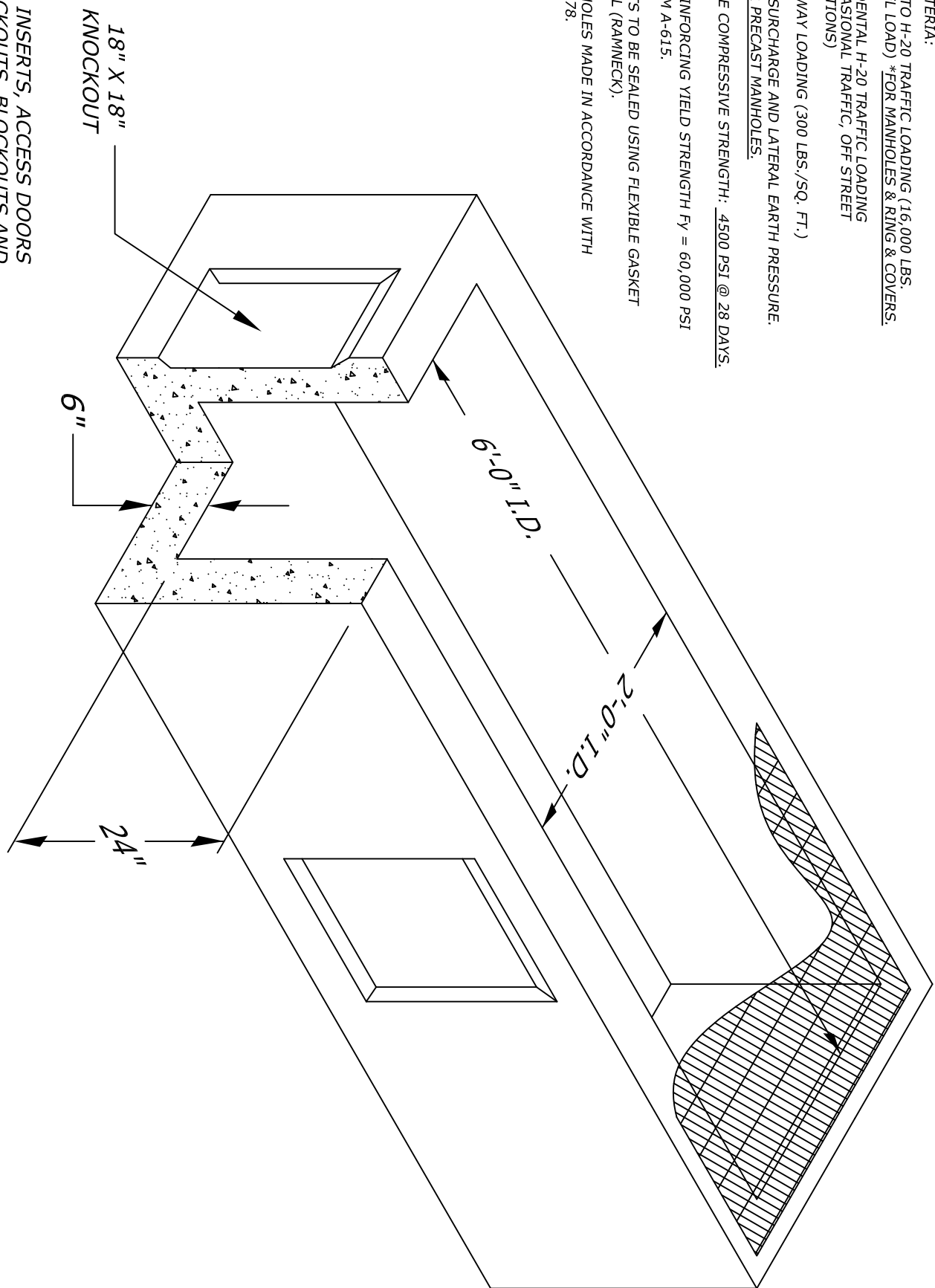


DESIGN NOTES:

1) LOAD CRITERIA:

- AASHTO H-20 TRAFFIC LOADING (16,000 LBS. WHEEL LOAD) *FOR MANHOLES & RING & COVERS.
- INCIDENTAL H-20 TRAFFIC LOADING (OCCASIONAL TRAFFIC, OFF STREET LOCATIONS)
- PARKWAY LOADING (300 LBS./SQ. FT.)
- H-20 SURCHARGE AND LATERAL EARTH PRESSURE. * FOR PRECAST MANHOLES.
- 2) CONCRETE COMPRESSIVE STRENGTH: 4500 PSI @ 28 DAYS.
- 3) STEEL REINFORCING YIELD STRENGTH F_y = 60,000 PSI PER ASTM A-615.
- 4) ALL JOINTS TO BE SEALED USING FLEXIBLE GASKET MATERIAL (RAMNECK).
- 5) ALL MANHOLES MADE IN ACCORDANCE WITH ASTM C-478.



PULL IRONS, INSERTS, ACCESS DOORS SUMPS, KNOCKOUTS, BLOCKOUTS AND OPENINGS ARE AVAILABLE PER JOB REQUIREMENTS.

